

This natural setting, located in the north-west of the urban centre of Girona, boasts varied flora and fauna. The flow of the river has turned the area into a wetland, shaping a riparian forest with different types of trees, including poplars, willows, alders and narrow-leaved ashes. It is also very rich and varied in terms of animal life. You will find anything from amphibians like frogs and toads and small mammals such as rabbits and others to all kinds of birds and certain reptiles. We invite you to visit this green area by bike or on foot and discover its wealth by means of the following proposals:

Activities Ribes del Ter Fluvial Park

Come and discover the Ribes del Ter Fluvial Park with your friends or family!



EN



Activities Ribes del Ter Fluvial Park



The project has been 66% cofinanced by the European Regional Development Fund (ERDF) through the Interreg V-A Spain-France-Andorra programme (POCTEFA 2014-2020). POCTEFA aims to reinforce the economic and social integration of the French-Spanish-Andorran border. Its support is focused on developing economic, social and environmental cross-border activities through joint strategies favouring sustainable territorial development.

Tourist Office
Rambla de la Llibertat, 1
17004 Girona
Tel. 972 010 001
www.girona.cat/turisme

[@turisme_gi](https://twitter.com/turisme_gi)
facebook.com/GironaTurisme
youtube.com/gironaturismetv
[@turisme_gi](https://instagram.com/turisme_gi)

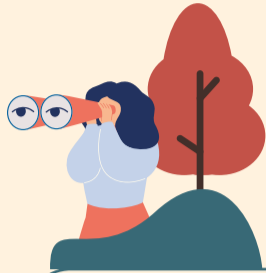
ACTIVITIES



1. A shelter for _____ ?

Solve this riddle and you will find out which black animals sleep hanging upside down in this shelter and another similar one in Fontajau: *I sleep during the day, I fly at night and I hunt flies and mosquitoes.*

2. Observing the pond in Les Deveses d'en Bru

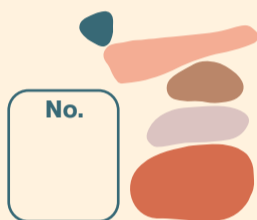


Slowly and quietly, hide behind the wooden observation screen and try to locate some of the animals that live in and around the pond. Look closely at the animals and draw the ones you have seen here.

3. Stone pylon

Find some of the stone pylons that lie along this route. How many have you seen?

Avoid touching them, as they enable reptiles, amphibians and micromammals to bask in the sun and warm themselves with the heat of the stones.



4. The Ribes del Ter Fluvial Park

Park follows the left bank of a stretch of the Ter in Girona. Do you know which park, renowned for its sycamore trees, lies on the other side of the river?

You can follow the Nature Itinerary that takes in the Ribes del Ter and Devesa parks to get to know the area better.

5. If it's autumn

you will find lots of leaves on the ground; collect some different sized and coloured ones. Do you know which trees some of the leaves you have collected are from?



6. Try to take a photo of one of the birds

on the riverbank from one of the Ter's viewing points. You will have to be patient and use the focus properly to get a good photo! Tag the image on your social media with the **#NaturaiFaunaTerGirona** hashtag.

7. The Ter is the main river in Girona,

but there are three other tributaries that flow through the city. Do you know the names of the four rivers that flow through Girona?

8. Do you know the differences between amphibians and mammals?

Look at the observation panels in the Deveses d'en Bru pond and sort the animals into mammals, amphibians and others (insects, reptiles, birds, etc.).

Mammals

Amphibians

Others

9. You will see how the environment changes according to the season

Come back here at another time of the year and observe the differences in the landscape and the colours of nature.

When it is **warm**, the trees are luxuriant, with brightly and intensely coloured leaves. However, when it begins to get **cooler**, there are some bare trees and the volume of the river increases. Even the animals that live in the area can vary from summer to winter, as each animal prefers to appear in a different climate and season.



What about you, do you have a favourite season?

10. Do you know which six native fish species

can be found at the confluence of the rivers Ter and Onyar? On Pedret Bridge, you will find a poster with illustrations of these six species of fish, as well as other curiosities about this unique area.

Approach Pedret Bridge to observe this ramp and the animal life at the confluence of the two rivers.

ANSWERS

1. Bat. Did you know that the bat is the only mammal that can fly? It has other peculiarities, such as its ability to find its way perfectly in the dark. It does so by means of echolocation, a technique consisting of the emission of sounds that collide with surfaces in the environment and cause echoes by means of which the bat can accurately identify objects and prey.

4. The Devesa. Did you know that there are more than 2,500 sycamore trees in the Devesa Park? These trees usually reach 40 metres in height. In the Devesa, however, they can grow considerably higher (up to 60 metres or more), as they were planted very close to each other and they have grown upwards in search of light.

7. The Ter

The Onyar: this is the most photographed river in Girona as it flows past the coloured houses. Its source lies in the municipality of Brunyola, it crosses the counties of La Selva, and El Gironès until it meets up with the Ter in the city.

The Güell: it begins in Aiguaviva and then passes through Vilablareix and Girona, where it flows into the river Ter.

The Galligants: this is a small river resulting from the confluence of several streams in the Gavarres massif that share its route through the Sant Daniel valley.

8. Mammals: rabbits, foxes, wild boars, badgers, otters.

Amphibians: leaf green tree frog, common midwife toad, Perez's frog, natterjack toad, common toad, salamander, palmate newt, marbled newt, Mediterranean painted frog, Iberian spadefoot toad.

Others: water snake, dragonfly, European pond terrapin, spider crab, grass snake, water scorpion, Mediterranean turtle.

10. The six species of native fish are the eel, trout, mountain barbel, European chub, freshwater blenny and spiny fish.

Thanks to the fish ladder built under Pedret Bridge it is easier for these species to negotiate the slope, thus ensuring connectivity and improving the habitat at the confluence of the two rivers. Approach Pedret Bridge to observe this ramp and the animal life at the confluence of the two rivers.